



海外國際大學上

HAI INTERNATIONAL STUDIES UNIVERSITYSHANGHAI

---

# 2016 届毕业生就业质量报告

---

SISU ANNUAL EMPLOYMENT REPORT

---

2016.12

---

# 前 言

1949 12

211

40

26

14

+

+

2016

2016

2016

# 目 录

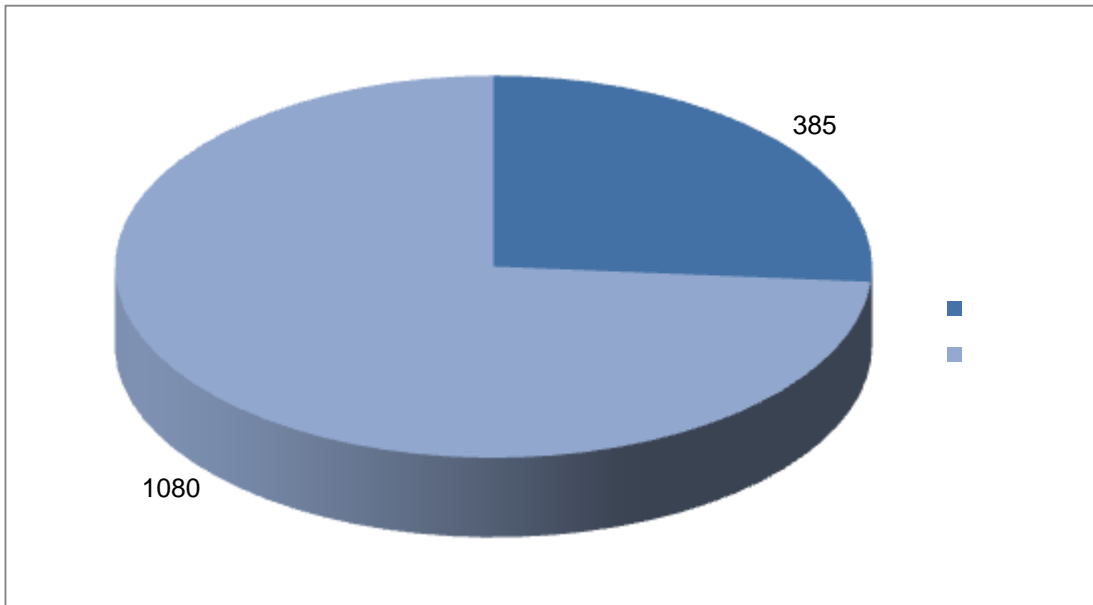
	.....	- 1 -
	.....	- 1 -
1.	.....	- 1 -
2.	.....	- 2 -
3.	.....	- 3 -
4.	.....	- 4 -
	.....	- 4 -
1.	.....	- 4 -
2.	.....	- 5 -
3.	.....	- 7 -
4.	.....	- 7 -
	.....	- 8 -
	.....	- 8 -
1.	.....	- 8 -
2.	.....	- 8 -
3.	.....	- 10 -
4.	.....	- 14 -
5.	.....	- 14 -
	.....	- 21 -
1.	.....	- 21 -

2.	.....	- 21 -
3.	.....	- 23 -
4.	.....	- 25 -
5.	.....	- 25 -
	.....	- 30 -
	.....	- 30 -
	.....	- 30 -
	.....	- 32 -
<b>2016</b>	.....	- 32 -
1.	.....	- 32 -
2.	.....	- 35 -
3.	.....	- 36 -
<b>2016</b>	.....	- 37 -
1.	.....	- 37 -
2.	.....	- 39 -
<b>2016</b>	.....	- 41 -
	.....	- 42 -
	.....	- 43 -
1.	.....	- 43 -
2.	.....	- 44 -
	.....	- 46 -
	.....	- 46 -

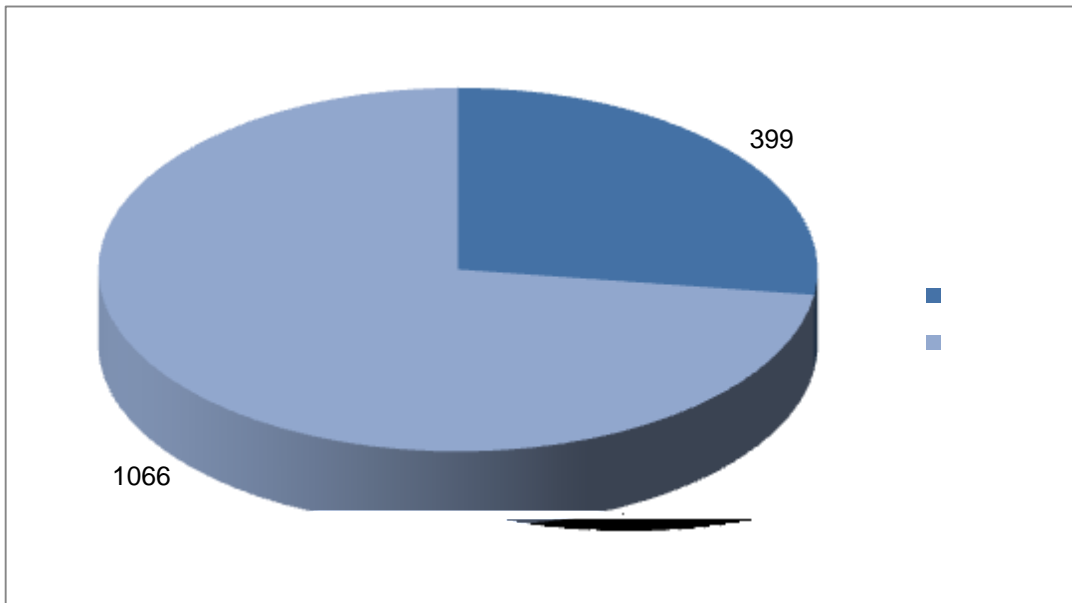


1.

2016	1465	30	385
26.28%	1080	73.72%	
1:2.81	399	27.24%	1066
	72.76%	1:2.67	



1:2016



2 2016

2.

2016

1465

13

30

1 2016

		1465	385	1080
		108	18	90
		85	11	74
		47	12	35
		49	13	36
		49	15	34
		48	22	26
		78	18	60
		47	17	30
		24	6	18
		48	10	38
		24	3	21
		23	3	20
		94	28	66
		49	2	47
		47	12	35
		47	7	40
		48	9	39
		91	31	60

		42	19	23
		41	15	26
		12	3	9
		12	2	10
		51	16	35
		9	2	7
		41	11	30
		81	31	50
		74	27	47
		52	12	40
		23	6	17
		21	4	17

3.

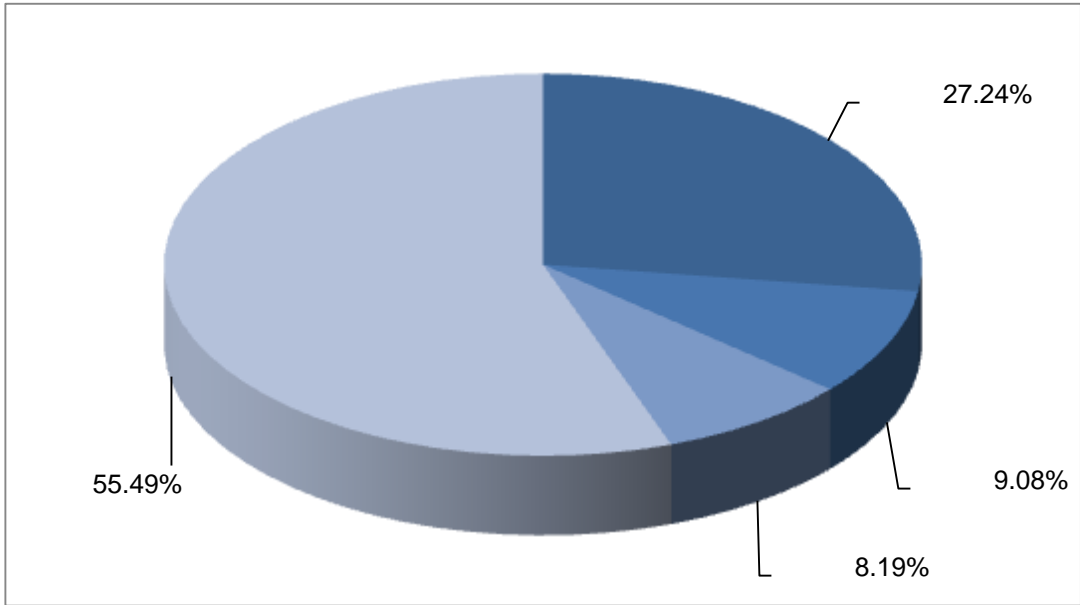
2016

31

27.24%

9.08% 8.19%





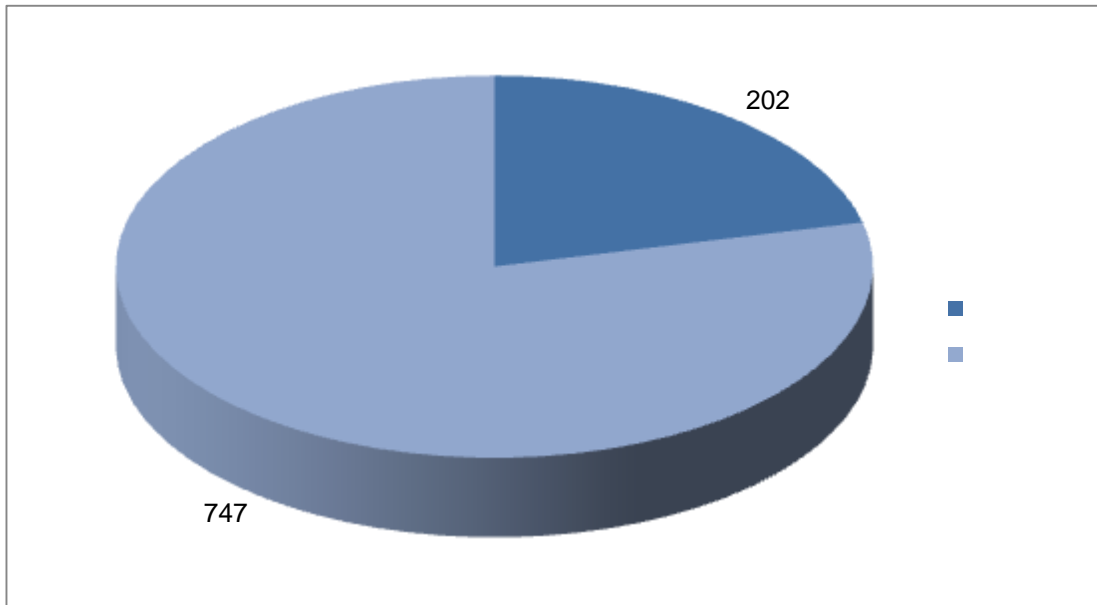
3 2016

4.

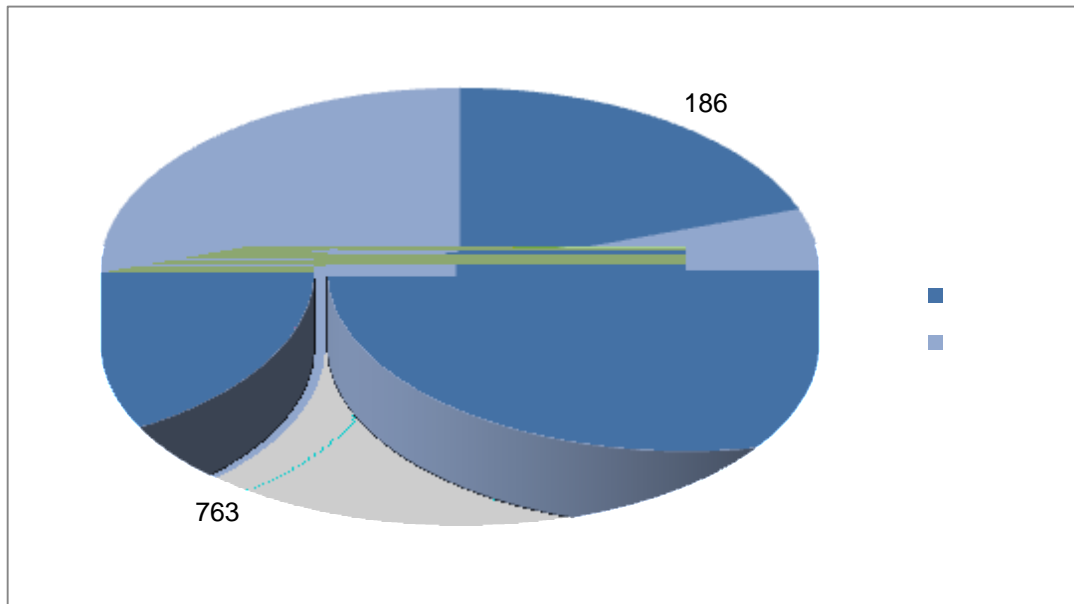
2016	19	90.92%	2.25%
	1.09%	1.09%	0.96%
	2.87%		0.82%

1.

2016	949	202	21.29%
747	78.71%	1 3.7	
186	67		19.6%
	8.8%	763	
692	80.4%		
91.2%		1:4.1	
	1:10.33		



4 2016



5 2016

2.

2016                      949                      37

2 2016

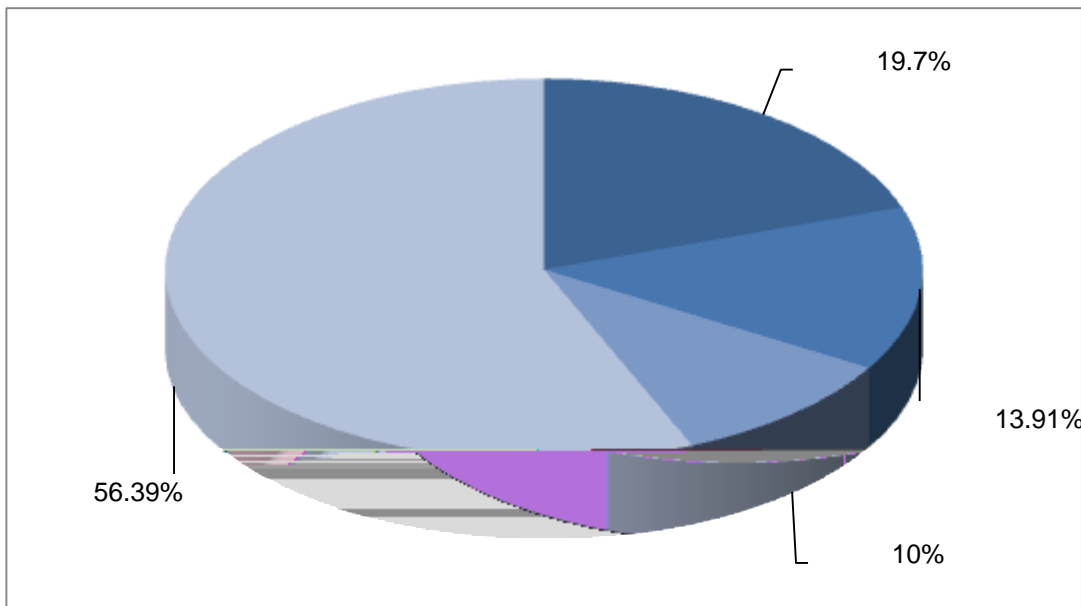
	14	3	11
	14	3	11

	5	1	4
	6	0	6
	25	10	15
	10	4	6
	3	0	3
	5	1	4
	4	0	4
	13	5	8
	103	9	94
	15	2	13
	3	0	3
	3	0	3
	5	0	5
	9	1	8
	12	0	12
	205	36	169
	26	5	21
	23	3	20
	24	0	24
	39	5	34
	11	1	10
	8	2	6
	4	0	4
	16	1	15
	18	4	14
	25	4	21
	17	2	15
	45	7	38

	21	4	17
	3	0	3
	6	0	6
	16	6	10
	2	2	0
	191	81	110

3.

2016 31 19.7% 13.91% 10%



6 2016

4.

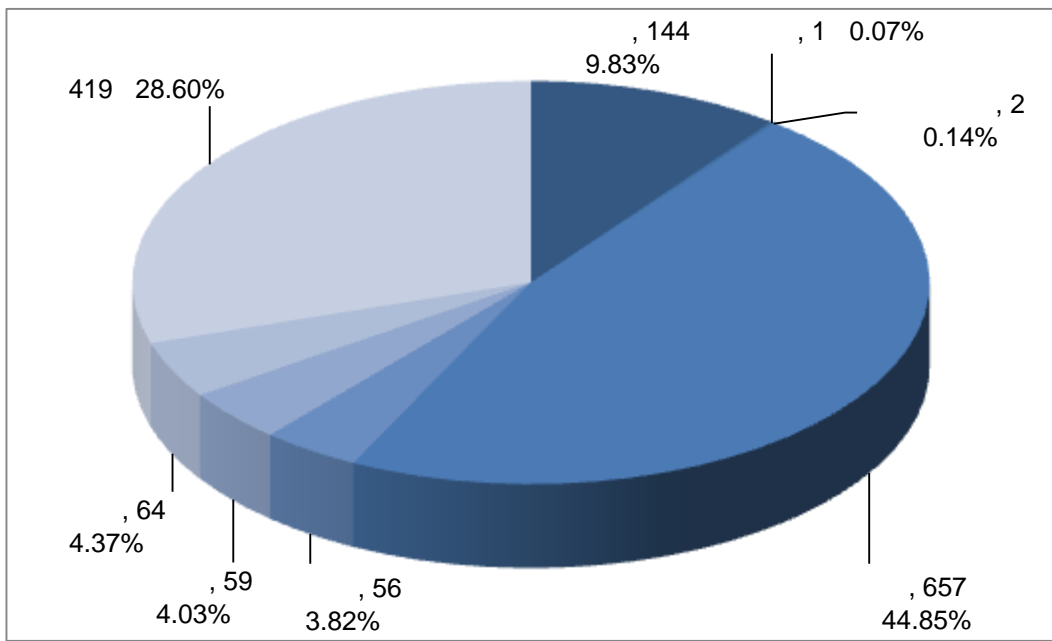
2016 15 95.05% 0.84%

0.74% 0.74% 0.63% 0.53%

0.42% 0.32% 0.74%

1.

2016	8	31	2016	1465	1402
			95.70%	144	
10			1		419
					657
		56			59
64			2		



7 2016

2016 8 31

2.

2016	8
31	
	100%
3 2016	2016 8 31

( )				
		1465	95.70%	
(193 )		108	93.52%	93.26%
		85	92.94%	
(145 )		47	100.00%	98.62%
		49	97.96%	

		12	100.00%	
60		51	96.08%	95.00%
		9	88.89%	
41		41	95.12%	95.12%
81		81	96.30%	96.30%
74		74		

4 2016

5

2016 8 31



		23	24.47%
		13	26.53%
		15	31.91%
		7	14.89%
		18	37.50%
		19	20.88%
		3	7.14%
		10	24.39%
		7	58.33%
		3	25.00%
		7	13.73%
		2	22.22%
		13	31.71%
		35	43.21%
		37	50.00%
		15	28.85%
		5	21.74%
		8	38.10%
		419	28.60%

419

234

16

55.85%

76.07%

2015

4.73%

185

44.15%

12

2016

6 2016

2016 8 31

	2	2	100.00%
	7	7	100.00%
	35	34	97.14%
	37	33	89.19%
	19	16	84.21%
	32	26	81.25%

4.

2016 8 31 144  
 10 9.83%

75.69%

7 2016

2016 8 31

	109		3
	6		3
	4		2
	3		2
	3		2
144	108	75%	

10

5.

2016 8 31 2016 838  
 657 56 59 64  
 2

1

2016 8 31 657 91.78%  
 37.44% 36.99%

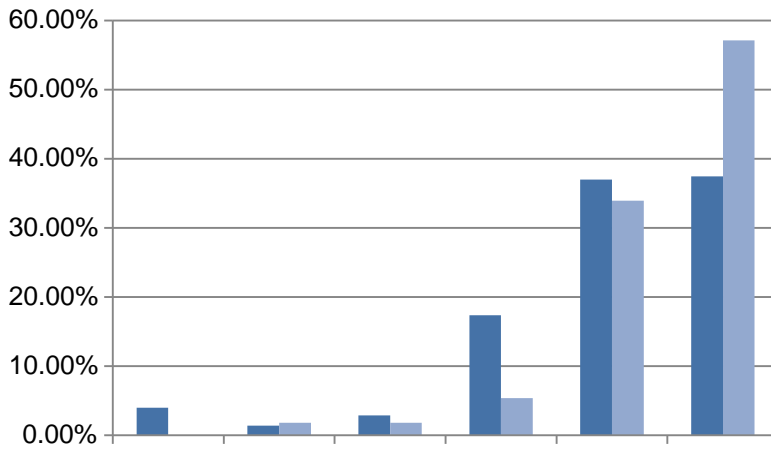
17.35%

56

96.43%

57.14%

33.93% 2016



党政机关、部队

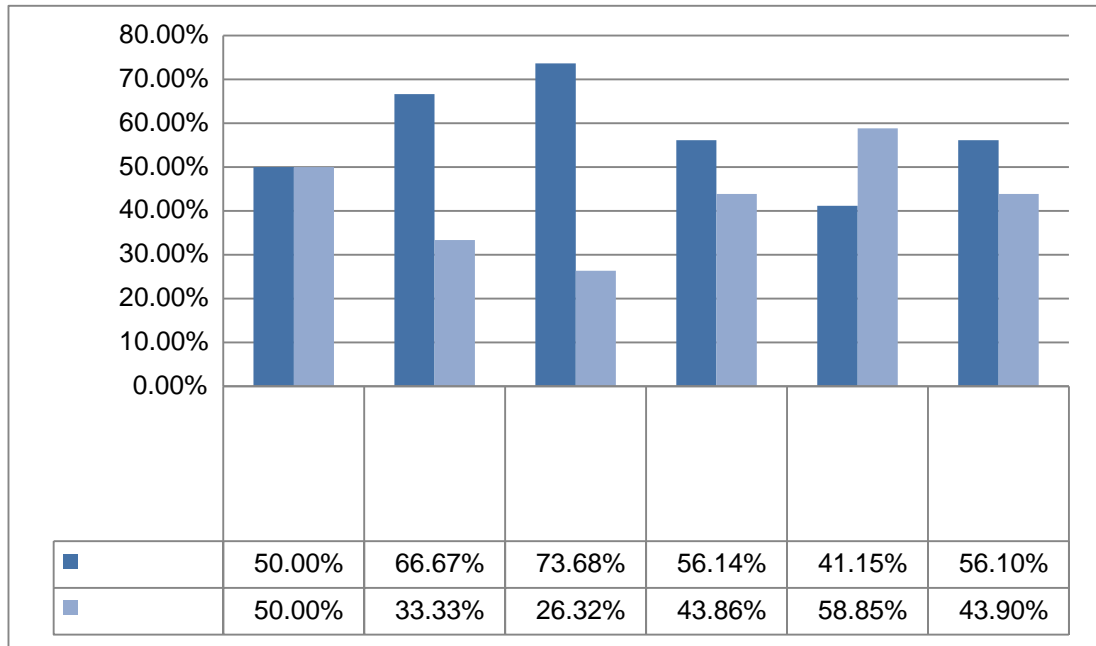
事业单位



8 2016



2016 8 31



9 2016

2016 8 31

2

657

34.25%

12.48%

11.42%

65

23.21%

17.86%

16.07%

12.5%

8 2016

2016 8 31

	225	34.25%	13	23.21%
	82	12.48%	9	16.07%
	75	11.42%	7	12.50%
	72	10.96%	3	5.36%
	51	7.76%	10	17.86%
	41	6.24%	1	1.79%
	34	5.18%	0	0.00%
	23	3.50%	9	16.07%
	13	1.98%	1	1.79%
	13	1.98%	0	0.00%
	12	1.83%	2	3.57%
	5	0.76%	0	0.00%
	4	0.61%	1	1.79%
	3	0.46%	0	0.00%
	3	0.46%	0	0.00%
	1	0.15%	0	0.00%

30

335

322

173

88

9 2016

2016 8 31

	225	34.25%	83	12.63%	142	21.61%
	82	12.48%	55	8.37%	27	4.11%
	75	11.42%	43	6.54%	32	4.87%
	72	10.96%	30	4.57%	42	6.39%
	51	7.76%	41	6.24%	10	1.52%
	41	6.24%	25	3.81%	16	2.44%
	34	5.18%	18	2.74%	16	2.44%
	23	3.50%	8	1.22%	15	2.28%
	13	1.98%	8	1.22%	5	0.76%
	13	1.98%	8	1.22%	5	0.76%
	12	1.83%	9	1.37%	3	0.46%
	5	0.76%	1	0.15%	4	0.61%
	4	0.61%	0	0.00%	4	0.61%
	3	0.46%	3	0.46%	0	0.00%

3 0.46%

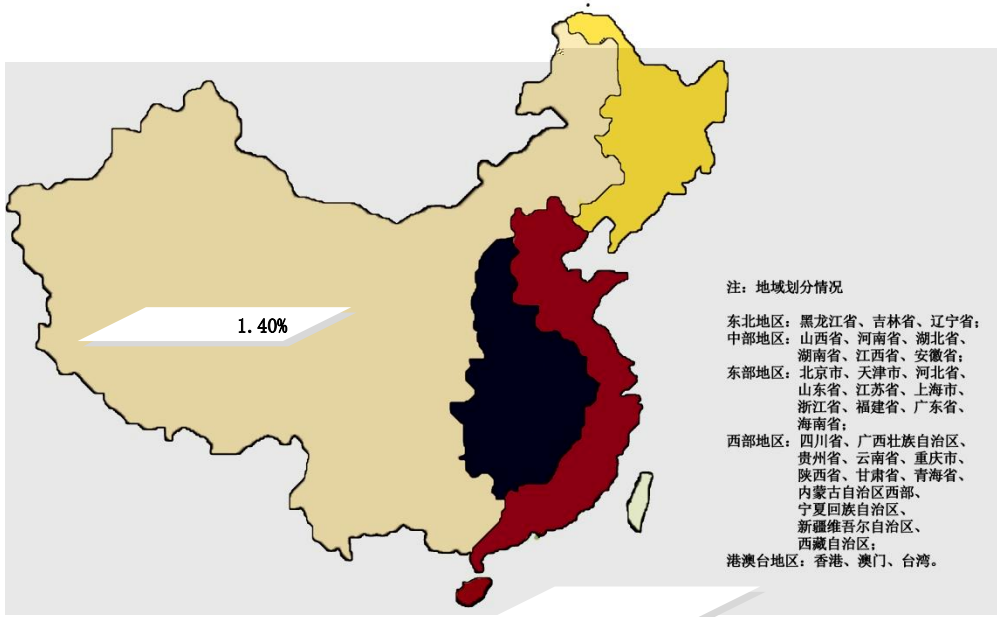
3

2016

96.63%

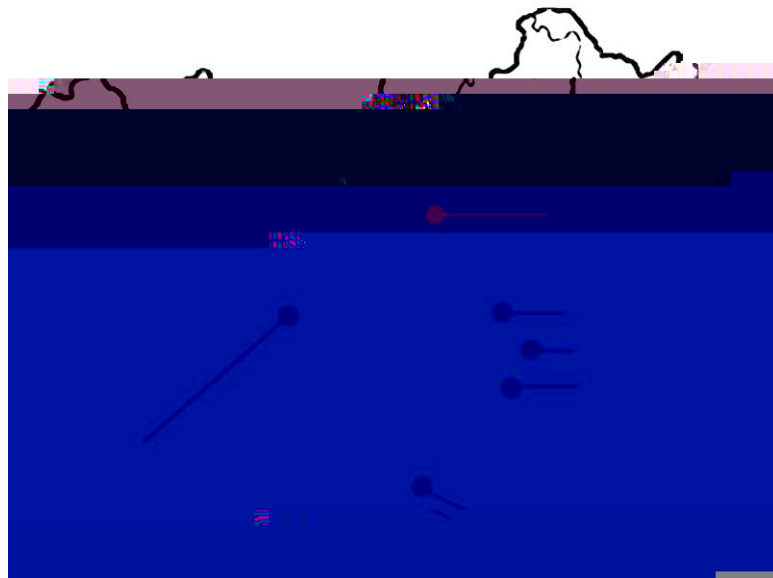
81.21%

4.21% 3.51% 3.37% 2.52%



10 2016

2016 8 31



11 2016

2016 8 31

4



5

2016	133	59
44.36%	35	26.32%
14	10.53%	5
3.76%	5	3.76%

2016

10 2016

2016 8 31

	59	44.36%
	35	26.32%
	14	10.53%
	11	8.27%
	5	3.76%
	5	3.76%
	4	3.01%

6

2016 8 31 10

1

1

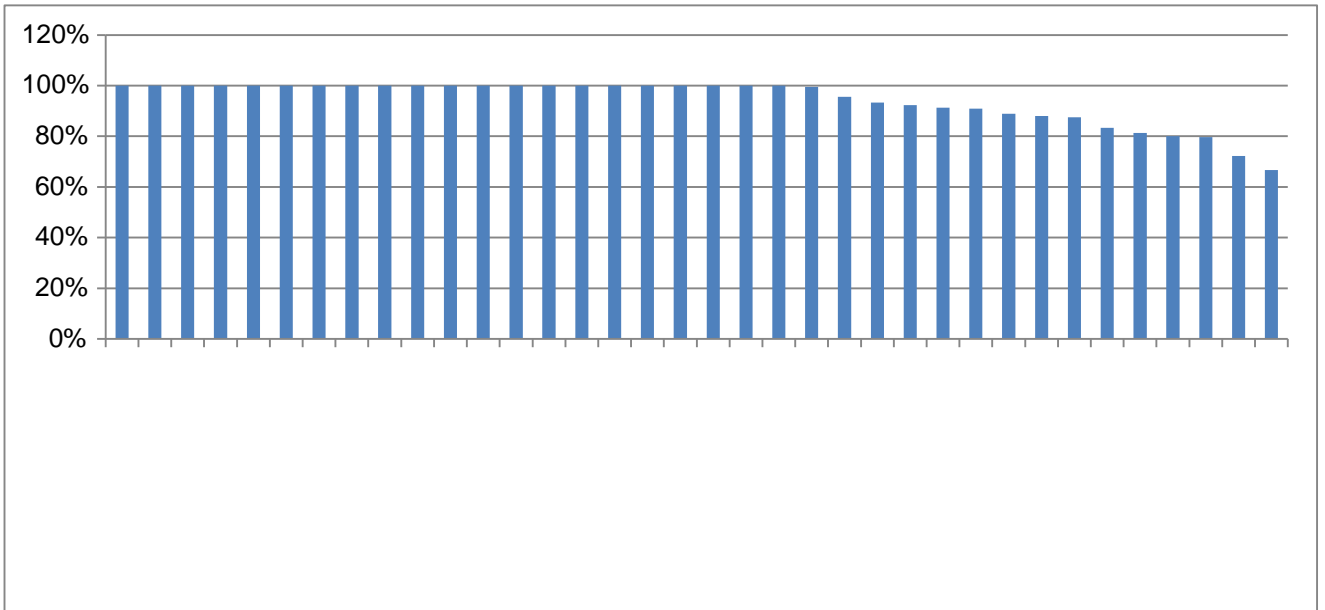
12

1

1.

2016	8	31	2016	949	893
			94.10%	28	
29				530	56
61		189			
	11	2016		2016	8 31

100%



13 2016

2016 8 31

12 2016

2016 8 31

	14	100%
	14	100%
	5	100%
	6	100%
	25	100%
	10	100%
	3	100%
	4	100%
	13	100%
	15	100%
	3	100%
	5	100%

	12	100%
	39	100%
	4	100%
	17	100%
	21	100%
	3	100%
	16	100%
	2	100%
	191	99.48%
	24	95.83%
	205	95.61%
	45	93.33%
	26	92.31%
	23	91.30%
	11	90.91%
	9	88.89%
	25	88.00%
	8	87.50%
	6	83.33%
	16	81.25%
	5	80.00%
	103	79.61%
	18	72.22%
	3	66.67%

3

2016 8 31

29

3.06%

0.29%

20

9

9

2

5

2016

13 2016

2016 8 31

	6		1		3
	4		1		1
	3		2		1
	3		1		3

2016 8 31

14 2016

2016 8 31

	11
	5
	2
	2
	2
	1
	1
	1
	1
	1
	1
	1

4.

2016 8 31 28  
 2.95% 1.43%

15 2016 2016 8 31

	19
	3
	2
	1
	1
	1
	1

5.

2016 8 31 2016 836  
 530 56 61 189  
 647

1

2016 8 31 2016 647 20  
 3.09% 57  
 8.81% 70 10.82% 24  
 3.71% 81 12.52% 157  
 24.27% 85 13.14% 73  
 11.28% 24  
 3.71% 56 8.66%

16 2016

2016 8 31

	20	3.09%
	57	8.81%
	70	10.82%
	24	3.71%
	81	12.52%
	157	24.27%
	85	13.14%
	73	11.28%
	24	3.71%
	56	8.66%

2

647

17 2016

2016 8 31

	199	30.76%
	115	17.77%
	70	10.82%
	65	10.05%
	58	8.96%
	28	4.33%
	25	3.86%
	17	2.63%
	15	2.32%
	12	1.85%
	11	1.70%
	11	1.70%

	7	1.08%
	5	0.77%
	3	0.46%
	2	0.31%
	2	0.31%
	1	0.15%
	1	0.15%
	647	100.00%

3

2016 647 73.11%  
3.33%

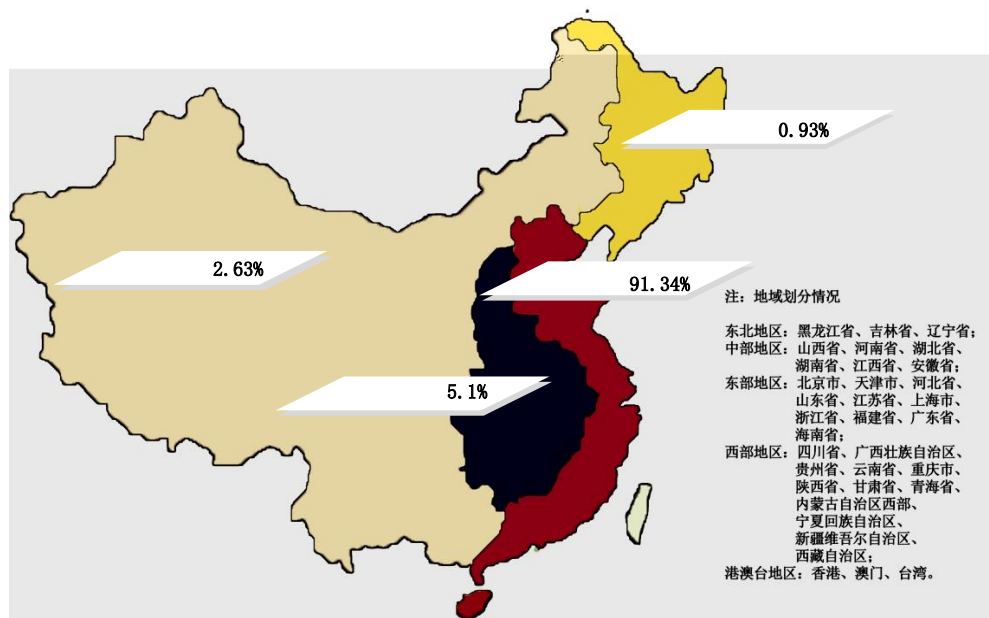
18 2016

2016 8 31

	473	73.11%
	30	4.64%
	30	4.64%
	26	4.02%
	10	1.55%
	10	1.55%
	10	1.55%
	9	1.39%
	7	1.08%
	7	1.08%
	6	0.93%
	4	0.62%
	3	0.46%



	3	0.46%
	3	0.46%
	2	0.31%
	2	0.31%
	2	0.31%
	2	0.31%
	2	0.31%
	1	0.15%
	1	0.15%
	1	0.15%
	1	0.15%
	1	0.15%
	1	0.15%
	1	0.15%
	647	100.00%

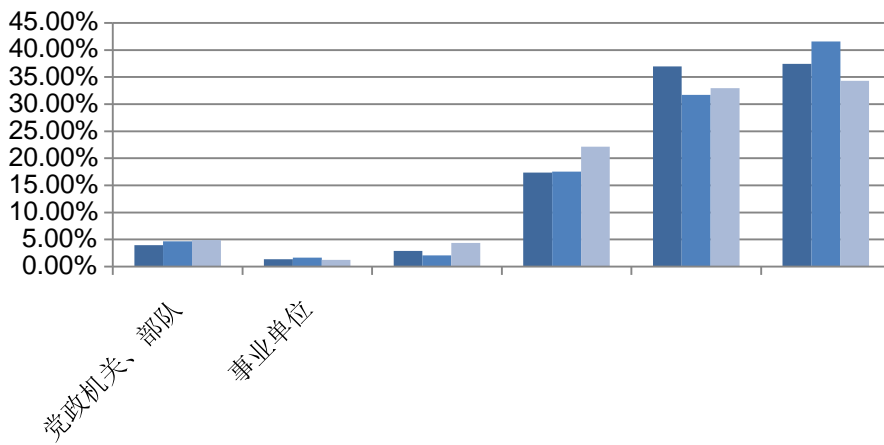


14 2016

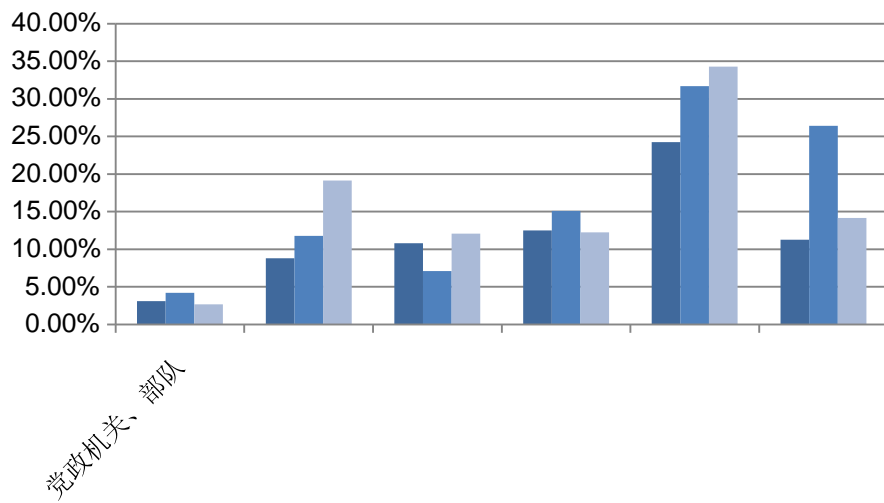


25.83% 2016      28.60%  
49.42% 2016      44.84%

2014      24.83% 2015  
2014      48.41% 2015  
2014



15



16

**2016**

2016 8 31 4228  
893 1.98 2016 890

2156 33643 3.17  
1:22.96 5.36

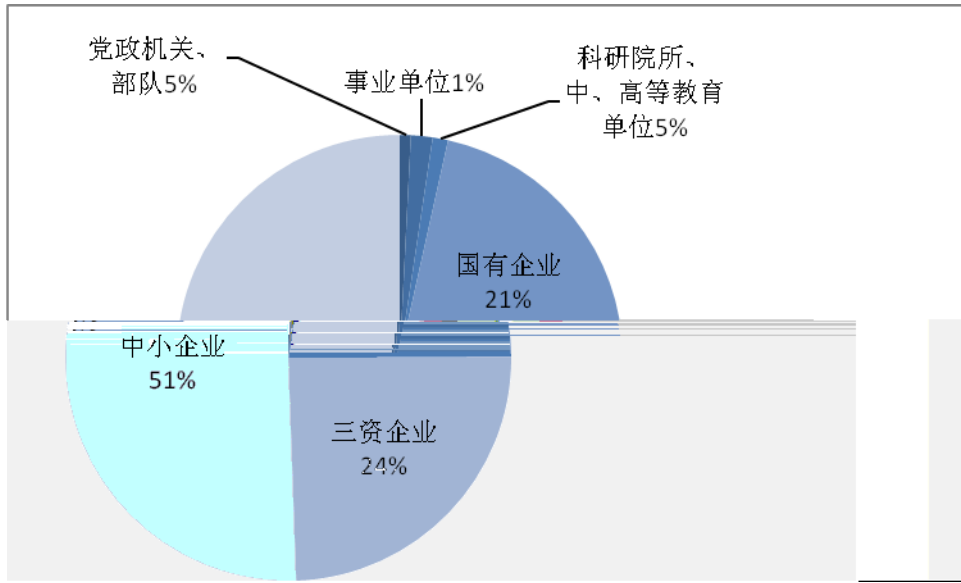
**1.**

1

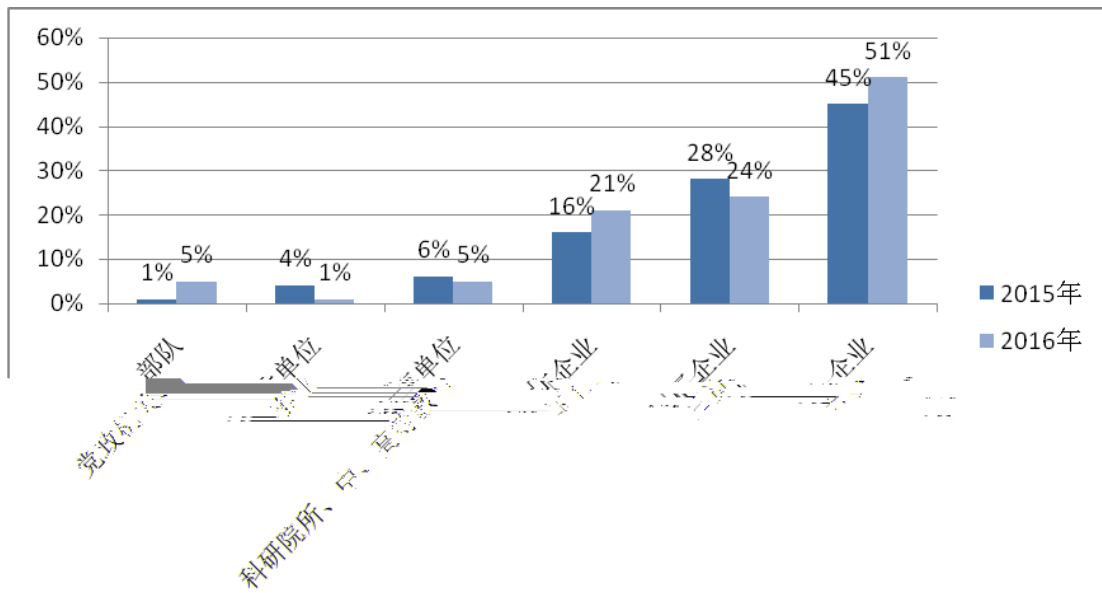
2016 890

**19 2016**

	450
	218
	191
	10
	14
	7
	890



17 2016



18 2015 2016

6%

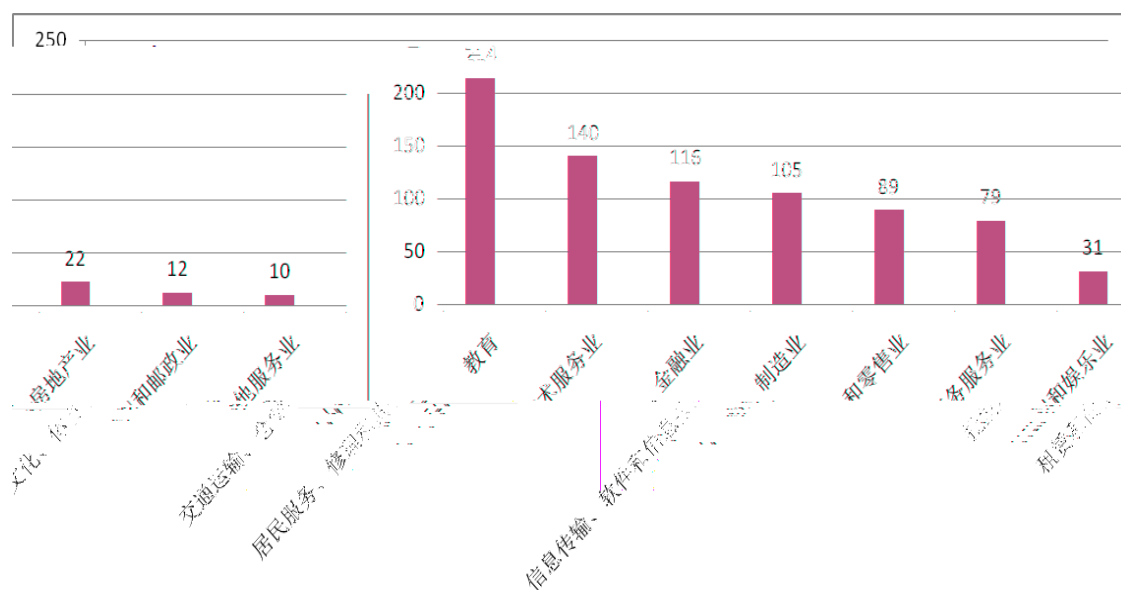
4%

5%

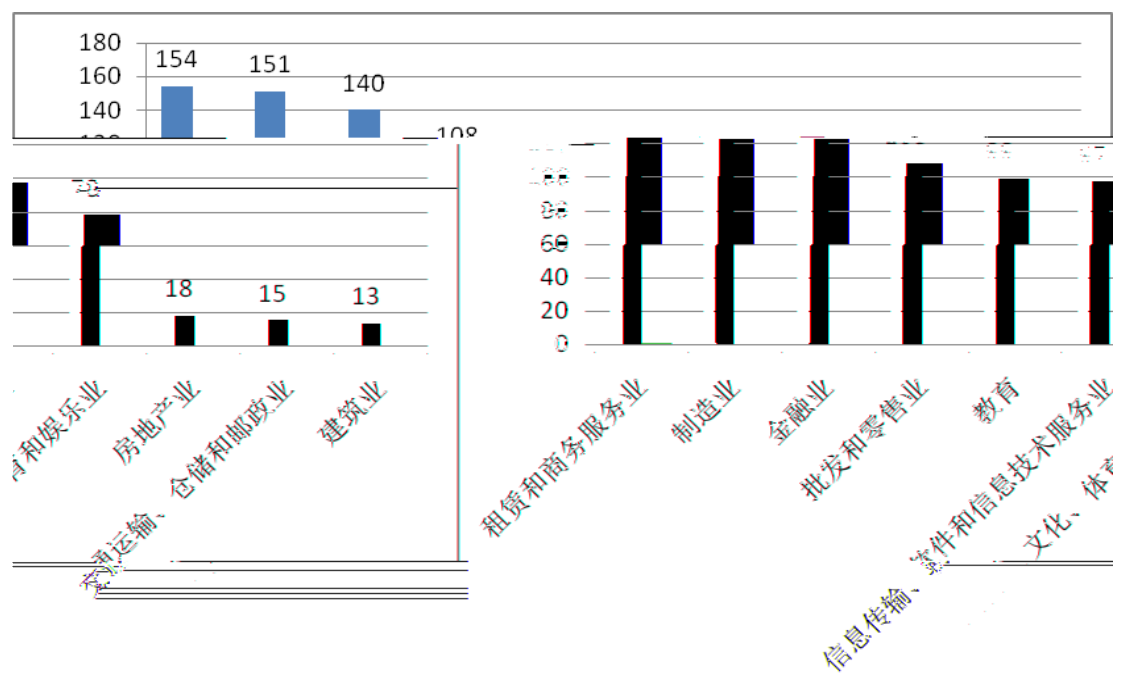
2

20

96



19 2016



20 2015

2016

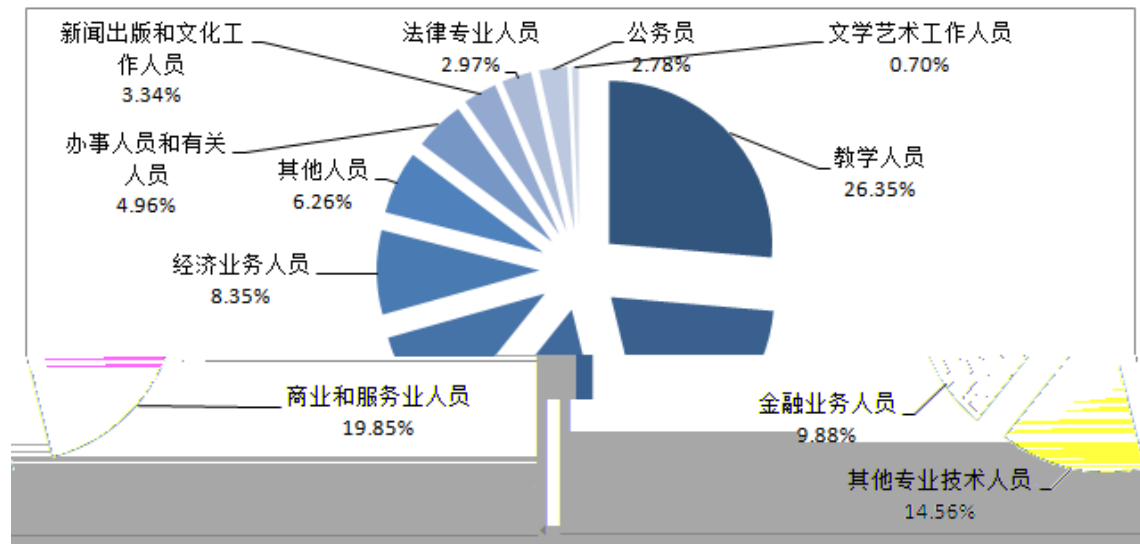
2016

2.

2016

2156

11



21 2016

2016

20 2016

	568	26%
	428	20%
	314	15%
	213	10%



	180	8%
	135	6%
	107	5%
	72	3%
	64	3%
	60	3%
	15	1%

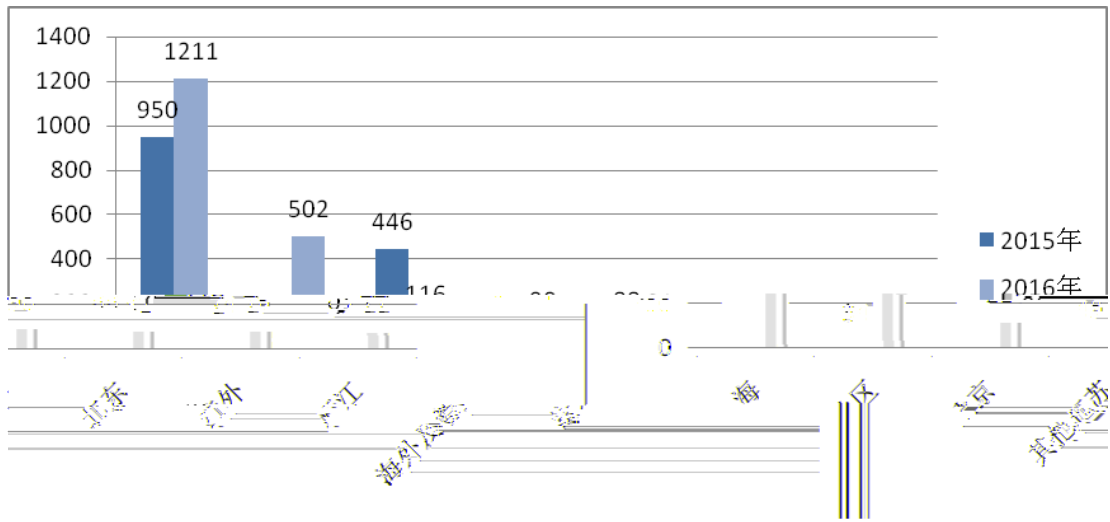
2016

+

2016

3.

2016



22 2015 2016

2016

22

## 2016

1.

2016

2016

21 2016

	108	467	893	23649	1:218.97

	85	315	621	19327	1:227.38
	47	338	697	16971	1:361.09
	49	274	567	15572	1:317.8
	49	258	528	11620	1:237.14
	48	361	714	23340	1:486.25
	78	269	536	15230	1:195.26
	47	292	590	13808	1:293.79
	24	230	478	8218	1:342.42
	48	256	528	8708	1:181.42
	24	266	529	8738	1:364.08
	23	200	424	8340	1:362.61
	94	210	432	11539	1:122.76
	49	199	414	8162	1:166.57
	47	334	638	9845	1:209.47
	47	247	494	9056	1:192.68
	48	199	407	7813	1:162.77
	91	191	398	7542	1:82.88
	42	160	342	7491	1:178.36
	41	165	352	7350	1:179.27
	12	25	58	799	1:66.58
	12	26	60	800	1:66.67
	51	173	362	7452	1:146.12
	9	25	57	792	1:88

	81	183	383	8221	1:101.49
	74	190	395	7715	1:104.26
	52	187	382	8117	1:156.1
	23	46	88	1124	1:48.87
	21	42	79	997	1:47.48

2016

30

1 50

1 100

24




**2016**

2016

2016

2016

2016

2016

2015 9

10 2016 3 4

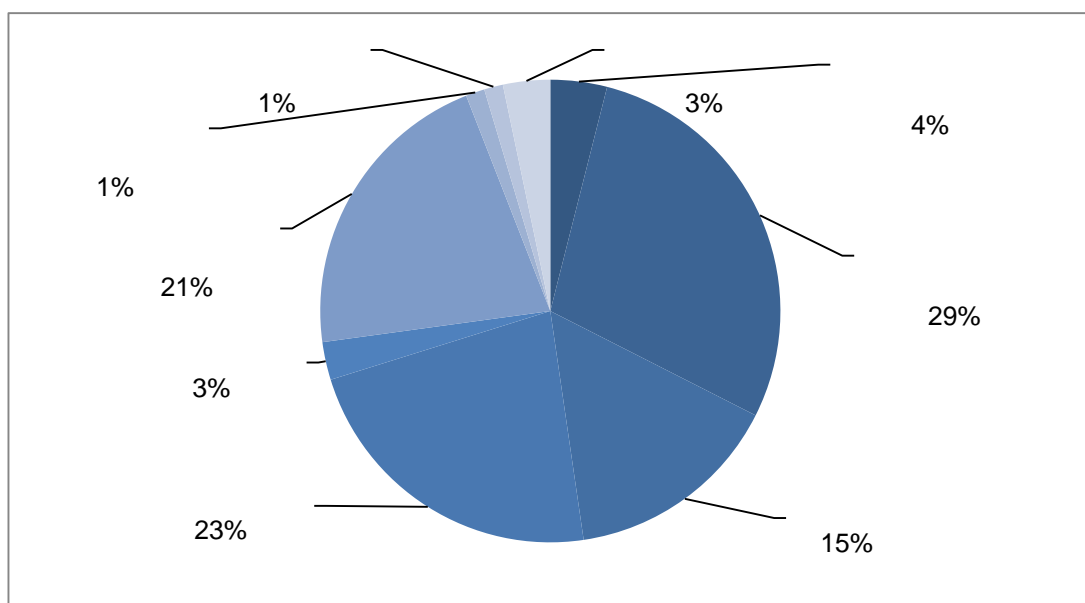
2016

63

2016

1.

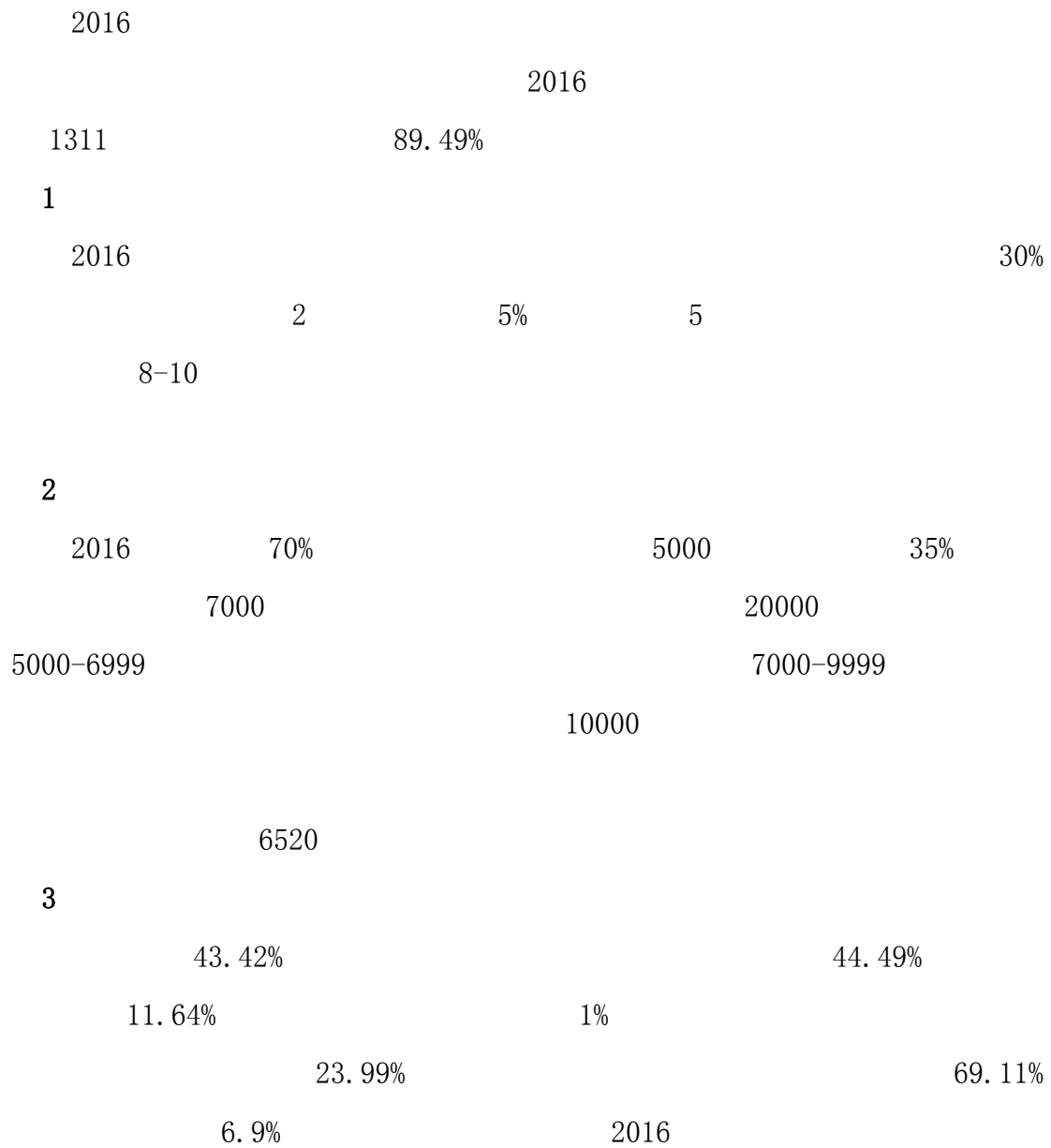
2016

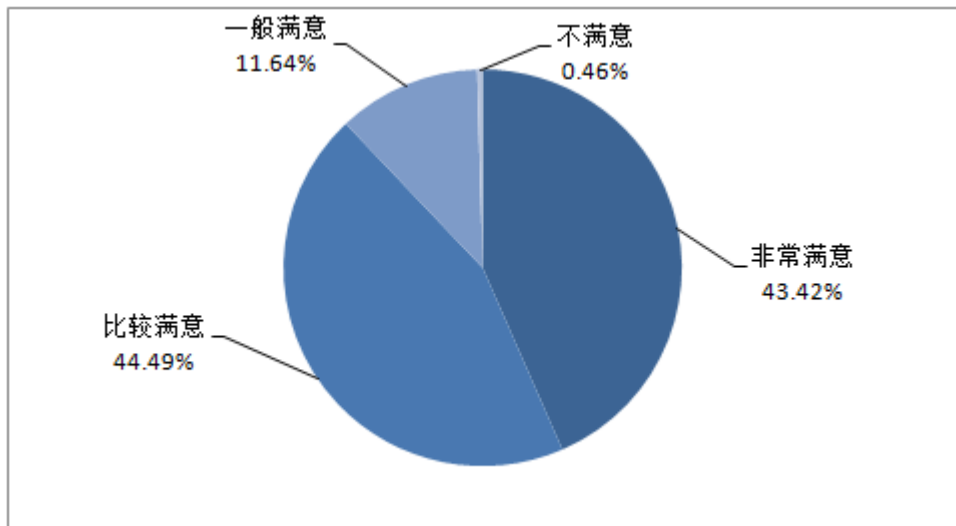


23



2.





24 2016



		2016	
63	20		
	2016		890
2156		85	
	238		
2016	2		
		300	



2017

